



Topeka Area Catbackers



Annual Family BBQ and Auction

We hope you had a chance to attend the 29th annual Topeka Area Catbackers, Family BBQ and Auction which was held on Monday, June 27th at the Kansas Expocentre. Again this year the BBQ was catered by Puffy's Steakhouse and salads were donated by Resers's Fine Foods. The emcee for the evening was Wyatt Thompson along with guest speakers Kirk Schulz, Frank Martin, Bill Snyder, and Deb Patterson. The special guests in attendance included Laird Veatch, Lon Floyd, Chad Weiberg, Darchelle Martin, Mike Clark, Missy Hendrick and Andrew Hamor. The classy cats, student athlete ambassadors and Willie the Wildcat helped with the live auction and provided entertainment for the kids. The live auction items included limited edition framed prints of the "Football Team Running Arm in Arm" which was autographed by Bill Snyder, and a "Sunflower Sundown" print also autographed by Bill Snyder, Frank Martin and Deb Patterson. Other items were a chance to be honorary coach at either a men's or women's basketball game and chair back seats to a football game. One special item that was included in the live auction was a replica of Jordy Nelson's Super Bowl ring, which was donated by Jostens, Inc. There was a silent auction as well, with items that were donated from various local merchants.

We appreciate all the generous donations from local merchants and individuals, and would like to say thank you for making our event a success once again. Through that generosity the club was proud to present our 2011 donation of \$10,000 to the KSU Ahearn Fund. We would also like to thank the many volunteers that helped contact donors and donated their time at the auction. We look forward to you joining us next year.



Catbacker Golf Tournament

The Topeka Area Catbackers hosted their annual Golf Tournament on Friday, July 8th at the newly opened Firekeeper Golf Course located in Mayetta, Kansas. The club enjoyed a record turnout by hosting 34 teams and was fortunate with the weather as the afternoon temperature reached a manageable 85 degrees. Voice of the Wildcats, Wyatt Thompson, and Mark Jansen, of the Manhattan Mercury, joined Kansas State quarterback Collin Klein and freshmen center B.J. Finney to play a few rounds with participating teams. After the tournament, the event continued at the Prairie Band casino banquet hall where team scores were posted and raffle winners were announced. Dinner was served as members listened to a few words about the upcoming football season from Klein and Finney.

We would like to thank everyone who participated and generously sponsored this year's golf tournament, which helped the Topeka Area Catbackers make it as successful as we hoped it would be. We are currently making plans for the 2012 tournament and we hope you can join us.

Fall 2011 • www.topekaareacatbackers.com

Season Kickoff with Beer Tasting Event

On August 26, 2011, at the Lake Shawnee Shelter house, the Topeka Area Catbackers enjoyed an evening of beer tasting. Catbackers were asked to bring their favorite import and/or domestic microbrew beer to share. A common favorite was Purple Haze, an American style wheat beer with raspberry puree brewed in Abita Springs, Louisiana. There were plenty to choose from including many from the local breweries, Tallgrass Brewing Co. and Little Apple Brewing Co. This was a great event to get Catbackers excited for the start of football season and meet current members in the club.



Catbacker Day at Gary's Pumpkin Patch

Gary's Pumpkin Patch will give all Topeka Area Catbacker members a 30% admission discount on Sunday, October 9, 2011. Just show your membership card and receive admission for \$7.00, instead of the regular \$9.95 price. Sunday hours are from Noon until 6:00 PM. Gary's is located 8 miles East of Topeka Blvd on Highway 24, then turn South on Decatur Road. You'll see the huge Gary's Pumpkin Patch sign.

Admission to the Fall Festival includes the corn maize, hayrack rides, pumpkin patch, crop hopper, hay bale haven, tire pyramid, slither slide, corn pit peril, pig races, goat mountain, giant rocking chair and lots of vittles for purchase. Mark your calendar for a day of fun.

Football Watch Parties

Beginning this Fall 2011, the Topeka Area Catbackers will host watch parties for all televised away KSU football games. We will have the upstairs private media lounge reserved at Jeremiah Bullfrogs Live Sports Bar & Grille at the Gage Center location. It is located at 4115 SW Huntoon and has state of the art flat screen TV's, plus seating for 90 fans. Come out and watch all televised away KSU football games with other Topeka K-State fans.

These watch parties will be replacing the Tuesday night game replays and will only be for the away games that are televised. Door prizes will be given away at half-time.

- September 24, 2011 KSU vs. Miami
- October 15, 2011 KSU vs. Texas Tech
- October 22, 2011 KSU vs. KU
- November 5, 2011 KSU vs. Oklahoma State
- November 19, 2011 KSU vs. Texas

Contact us to place your ad in the next newsletter
(785) 273-7424



Like us on
Facebook

facebook.com



FOLLOW US ON

twitter

@tareacatbackers

Michael G. Eichten, CLU, ChFC
Financial Consultant*



**PEOPLES
BENEFIT
GROUP**

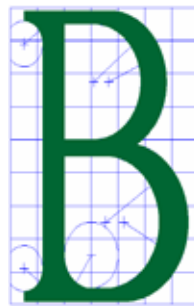
Employee Benefits / Insurance
Retirement Planning / Securities
1414 SW Ashworth Place • Topeka, KS 66604
(785) 271-8097 • Fax (785) 271-8085
meichten@peoplesinsure.com



MC MOHAN CONSTRUCTION

STEVE MOHAN
President

125 S. Kansas Avenue • Topeka, Kansas 66603-3614
Tel 785.233.1615 • Fax 785.233.8731 • Cell 785.925.1694
E-mail smohan@mohanconstruction.com
www.mohanconstruction.com



BRACK & ASSOCIATES CONSULTING ENGINEERS, P.A.

Engineering
Design For The
Future

3501 SW Gage Blvd.
Topeka, KS 66614-3824

Phone: (785) 271-6644
Fax: (785) 271-5666
E-Mail: ba@brackengin.com



Proud Supporters of Kaw
Valley Catbackers



**CONSTRUCTION
OF TOPEKA, INC.**

P.O. Box 750107, Topeka, Kansas 66675
phone: 785.354.4309 • fax: 785.354.1549



Leaders in Critical Environment Construction

1701 S.W. 41st Street
Topeka, KS 66609

ph.785.266.4222

fax.785.266.3313

www.kbsci.com



Gary Basom CPA, LLC

2813 SW Westport Plaza Drive, Ste. 107
Topeka, Kansas 66614

phone 785.783.3998
fax 785.783.3991

gary@garybasomcpa.com

8748 SW Hoch RD • Auburn, KS 66402



Derrick Keim
Turf & Landscape Specialist
Business Owner

cell 785-383-7839
office 785-232-0488

Retaining Walls & Patios
Grading - Seeding & Sodding
Landscape Design & Installation
Professional Fertilizing Programs
Irrigation & Landscape Maintenance

ColorWorks
PAINT & SUPPLY



Bob Swafford
Owner

TEL (785)272-8818
FAX (785)272-8254
bob@colorworkspaint.com

4410 SW 21st Street
Topeka, KS 66604-3504
www.colorworkspaint.com



**PPG
PITTSBURGH
PAINTS**

Michael Deutscher OD, PA
Doctor of Optometry

3601 SW 29th St, Suite 205
Topeka, KS 66614
Southwest Plaza Office Building
Phone: (785) 272-4583
Fax: (785) 272-5394

Website: www.topekaeyedoctor.com



Jurgensmeier
FINANCIAL SERVICES, INC.

Ronald L. Jurgensmeier

2813 SW Westport Plaza Dr. • Topeka, Kansas 66614
(785) 272-3775 • Fax (785) 272-1245



A proud Supporter of
Kansas State University

Horst, Terrill & Karst Architects, P.A.

2900 SW MacVicar
Topeka, Kansas 66611
785-266-5373
Fax-266-5270

www.htkarchitects.net

Topeka Area Catbackers Club Events

- September 24** • KSU vs Miami Watch Party / Jeremiah Bullfrogs Live
- October 9** • Topeka Catbacker Discount Day at Gary's Pumpkin Patch
- October 15** • KSU vs Texas Tech Watch Party / Jeremiah Bullfrogs Live
- October 22** • KSU vs Kansas Watch Party / Jeremiah Bullfrogs Live
- November 5** • Bus Trip to Oklahoma State Football Game / Stillwater, OK
- November 5** • KSU vs OSU Watch Party / Jeremiah Bullfrogs Live
- November 19** • KSU vs Texas Watch Party / Jeremiah Bullfrogs Live

If you have not renewed your membership, this will be your last newsletter.

Please mail renewal form and dues of \$20 to the address listed to the right.

Make checks payable to: **Kansas State Catbackers Inc.**

A membership renewal form can be found on our website:

www.topekaareacatbackers.com

Topeka Area Catbackers

c/o Samantha Samich

P.O. Box 4767

Topeka, Kansas 66604

samanthasamich@gmail.com

***Topeka Area Catbackers
P.O. Box 4767
Topeka, KS 66604***

